



LanSafe III & FailSafe III Power Management Software



Product Snapshot

Type: Power management software for UPSs

Price: Free. It is bundled with Powerware 3115, 5105, 5119, 5140, Prestige 9, 9104, 9110, 9150, and 9305 UPSs

Operating Systems: Support for all available platforms bundled on one CD (see back page)

Upgrades: Upgrades available on the web: www.powerware.com

It's 4:34 p.m. on a stormy Friday afternoon. As the lights begin to flicker throughout the building, all eyes turn to you — the company's network administrator.

Luckily for your company — and all of its employees — your network is protected by uninterruptible power systems (UPSs) and LanSafe III power management software.

Companies without power protection aren't so fortunate. By the time electricity is restored to them, a number of unpleasant consequences likely will have occurred — costing potentially tens of thousands of dollars — including: lost orders, lost records, corrupted files, and, in all likelihood, corrupted databases. But all is safe and sound on your company's system, where it's now 4:45 p.m., and LanSafe III has automatically initiated a complete, orderly shutdown, saving all work-in-progress on the workstations. While other power protection software turns off only the system directly connected to the UPS, LanSafe III's exclusive SafetyNet™ technology lets you define your shutdown process system-wide.

Programmable to first shut down individual workstations, LanSafe III saves work-in-progress allowing sufficient time for critical data to flow to the server. As the

storm outside continues to rage, your company's accounting orders are traveling through the hub to the server, as are records from purchasing and engineering. Incoming faxes are stored to the comm server. In-progress e-mails and files are saved to the e-mail server.

With LanSafe III, data is smoothly streaming from one network to the next, preventing the possibility of corrupted or lost files. At 4:55 p.m., your company's most critical equipment, including the database or file servers, are shut down last, after work-in-progress has been saved from workstations through hubs, switches, routers, and comm servers. Your company's data is safe and you can go home...

It's now 10:44 p.m. on that stormy Friday evening. Network administrators at other companies without LanSafe III have been toiling for hours, unsuccessfully attempting to retrieve lost data and access corrupted files, discouraged by the long work hours ahead.

You, on the other hand, were wise enough to protect your system with LanSafe III, and are now relaxing and ready to enjoy your days off.

Benefits

- ▶ Preserve data integrity system-wide with SafetyNet™ prioritized, sequential shutdown of all network devices
- ▶ Reduce cost per device for power protection with UPS Groups
- ▶ Receive system-wide control via cross-platform functionality and support for other manufacturers' UPSs
- ▶ Test networked UPSs from one node
- ▶ Determine overall operating environment with extensive graphical displays
- ▶ Stay informed of power problems by pager and e-mail
- ▶ Analyze your conditions with voltage logging
- ▶ Conserve power by means of scheduled on/off times
- ▶ Control separate receptacle groups on a single UPS with Precision Power Control™



Complete Network Protection With UPSs and LanSafe III

Prioritized sequential shutdown of all network devices

SafetyNet sequential shutdown provides unattended, orderly shutdown of all network devices and most popular client/server applications, saving work-in-progress. Enabling users to define their own shutdown process, SafetyNet ensures that critical equipment (such as the server) is shut down last, after work-in-progress has been saved throughout the network, thus preserving data integrity.

UPS Groups

With UPS Groups, up to 64 network devices can be connected to a single UPS, with sequential shutdown provided for

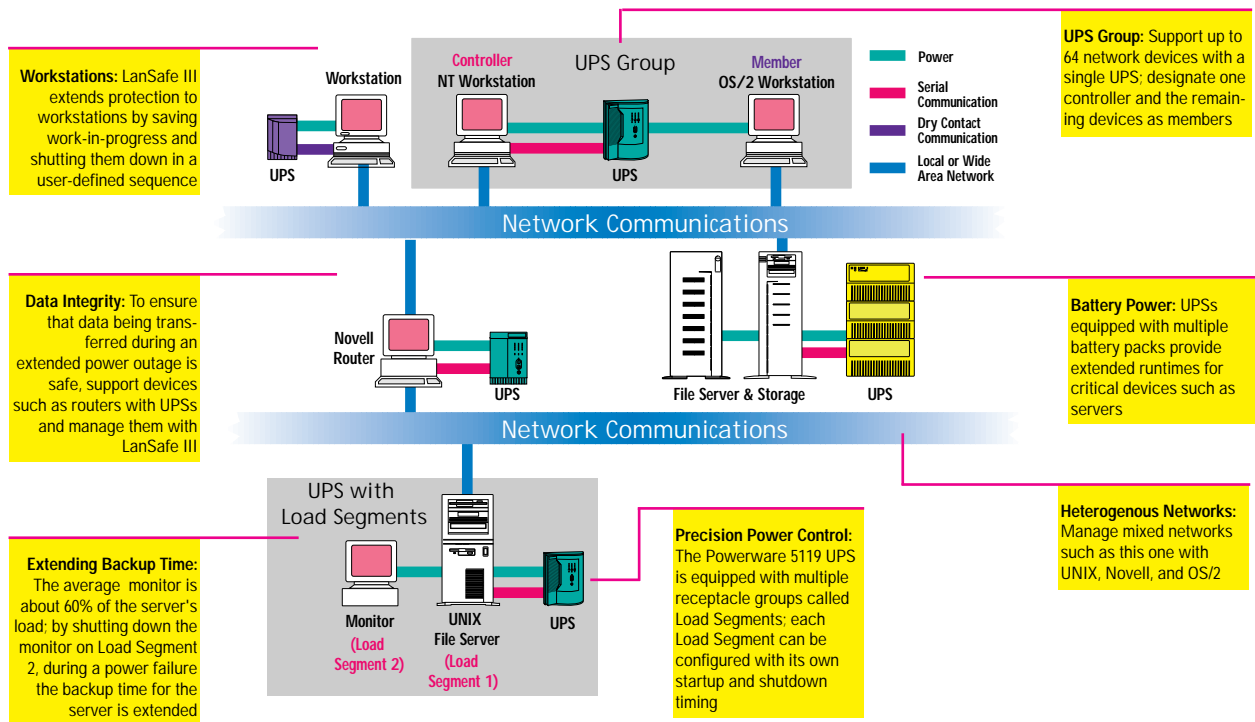
every device in that group. LanSafe III/FailSafe III power management software, is bundled with the Powerware 3115, 5105, 5119, 5140, 9104, 9110, 9150, 9305, and Powerware 9 Prestige models.

Cross-platform compatibility

LanSafe III provides system-wide functionality and monitoring capabilities via TCP/IP. Thus users can view power conditions on computers running different operating systems, such as monitoring a Unix system from a Windows NT or Windows 95 computer.

Power scheduling features

LanSafe III's Precision Power Control allows users to define their own shutdown and startup processes, ensuring the network powers up and down in an orderly fashion. Even more, by programming individual receptacle groups on a single UPS to shut down first, backup time can be extended for critical devices. Scheduled on/off times, for receptacle groups or the entire UPS, increase system security and conserve power.



SNMP Agents

LanSafe III provides SNMP agents that gather UPS information and generates traps via the Standard RFC 1628 MIB. LanSafe III supports trap generation to any SNMP-compatible management station, including HP Open View, Novell ManageWise, and IBM NetView.

Additional Capabilities

For easy network expansion, users can make comm port changes without rebooting. Even more, LanSafe III is compatible with all manufacturers' UPSs, enabling network administrators to seamlessly integrate the software throughout their entire network and onto existing UPSs.

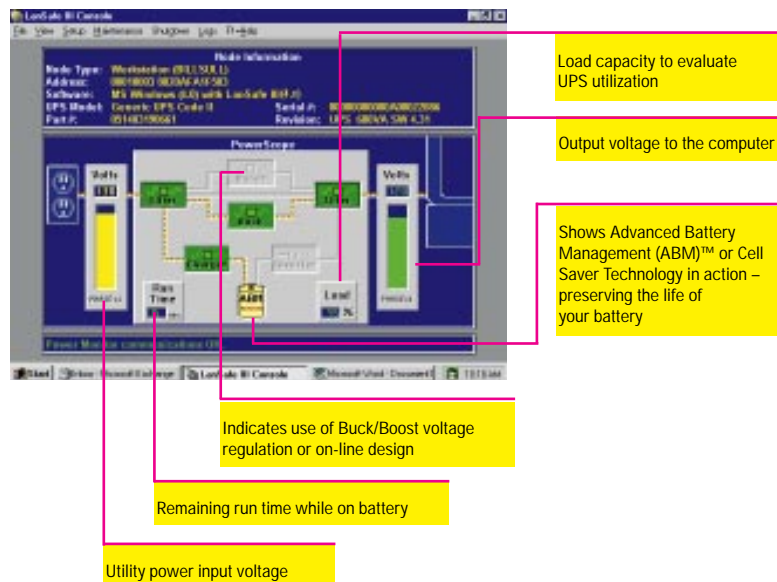


Analyze Power Problems With Voltage Logging



Voltage logging analyzes network power conditions and provides a record of power disturbances. In addition, this information can be easily imported into spreadsheet, database, and graphing programs.

Extensive System Monitoring With Exclusive PowerScope Display



LanSafe III's PowerScope display, a dynamic block diagram, illustrates the flow of power through the UPS and out to the load, providing values for input, output, and other data. With detailed numeric/graphical power status data displays, users can determine the overall operating environment of the computer, view real-time power conditions at any network UPS, and remotely reboot or shut down any network node.

UPS Testing

Complete network-wide testing is also available with the PowerScope display. Users can test all UPSs simultaneously from one network node and determine if they are functioning normally within minutes. With other manufacturers, only one UPS can be tested at a time, a process that can take hours.

Network silent

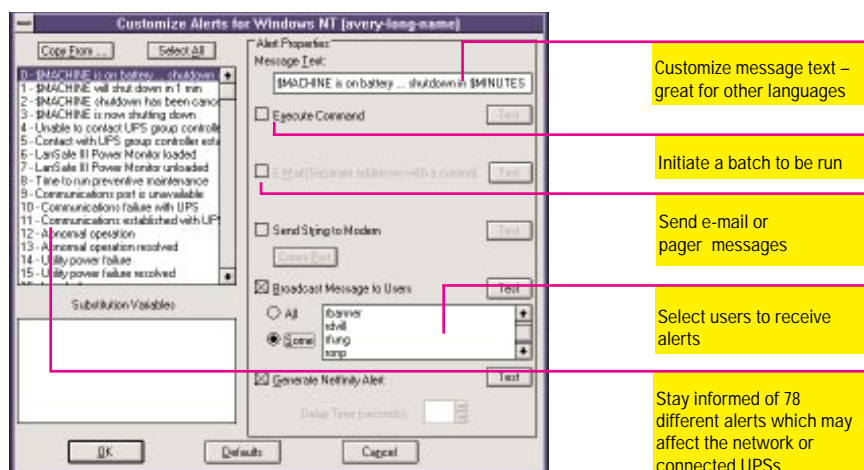
This feature eliminates unnecessary Service Advertisement Protocols (SAPs), which cause performance degradation due to excess traffic.

Stay Informed With Customizable Alerts

LanSafe III ensures that nobody is left in the dark when a power disturbance occurs. With power loss warnings, users receive instantaneous information on adverse power conditions. Personalized alert messages allow users to customize message text (in any language) and determine a user list to receive alerts, while the software's pager and e-mail capabilities ensure that users in remote conditions stay informed of power conditions.

IBM Netfinity support

For users running IBM Netfinity, the software processes alert messaging, ensuring that everyone stays informed of current conditions during a power disturbance.





Model Selection Guide

PRODUCT	OPERATING SYSTEM (PLATFORM)	PROTOCOL(S) SUPPORTED ¹
FailSafe III (for standalone configurations)	OS/2 2.0-4.0 (OS/2 compatible running OS/2 2.0-4.0)	n/a
	Windows 3.1x (286/386/486/Pentium)	n/a
	Windows 95 & 98 (386/486/Pentium) ³	n/a
	Windows NT 3.5x-4.0 (Alpha and 486/Pentium Intel) ³	n/a
LanSafe III (for networked configurations)	OS/2 2.0-4.0 (OS/2 compatible running OS/2 2.0-4.0)	NetBEUI, or TCP/IP 2.0 or above (SNMP agent available for OS/2 2.1 and above) ⁴
	Macintosh System 7.x, 8.1	Novell Client and/or AppleShare Macintosh IPX (does not support SNMP or Netfinity) ²
	Windows 3.1x (286/386/486/Pentium)	IPX via IPXODI.COM
	Windows 95 and 98 (386/486/Pentium) ^{3,5}	IPX/SPX, or NetBEUI, or TCP/IP (SNMP agent available)
	Windows NT 3.5x-4.0 (Alpha or 486/Pentium with network services installed) ^{3,5}	NetBEUI, or TCP/IP for NT 3.51 or above (SNMP agent available for NT 3.51 or above)
	DOS 3.3-6.2x with Netware 3.x-4.11 or 5.0 Client (088/086/286/386/486/Pentium)	IPX via IPXODI.COM
	Novell NetWare 3.x-4.11, 5.0 (386/486/Pentium PC or compatible computer)	IPX, or TCP/IP for Netware 3.12 or above (SNMP agent available for Netware 3.12 or above)
	AT&T Unix SV R4 Version 3.0 (386/486/Pentium)	TCP/IP
	Data General DG-UX R4.2MU01 or higher (Intel)	TCP/IP
	Digital Unix 4.x (Alpha)	TCP/IP
	HP-UX 9.07-10.02, 11.00 (HP9000/xxx Series)	TCP/IP (SNMP agent available for HP-UX 9.7 or above, but requires installed HP SNMP Extensible Agent v.3 or above for HP-UX 9.x or HP SNMP Extensible Agent v.4 for HP-UX 10.x)
	IBM AIX 3.x or 4.x (AIX 3.x-4.x for PowerPC or AIX 3.x or 4.3 for RS/6000 Series RISC)	TCP/IP (SNMP agent available for AIX 4.1 or above)
	Interactive Unix 3.0.1-3.2.2	TCP/IP
	Linux w / kernel 2.x.x	TCP/IP
	SCO Unix, OpenServer 3.x, 5.x	TCP/IP (SNMP agent available for OpenServer 5.x)
	Solaris 1.x with SunOS 4.1.x & OpenWindows 2.0 or 3.0 (SPARC)	TCP/IP
	Solaris 2.x with SunOS 5.x & OpenWindows 3.x (SPARC)	TCP/IP (SNMP agent available for Solaris 2.4 or above, but requires installed HP SNMP Extensible Agent v.4 for Solaris 2.x)
	Solaris 2.6 with SunOS 5.6 & OpenWindows 3.6 (Intel)	TCP/IP
	UnixWare 2.x (does not support dry-contact UPSs)	TCP/IP (SNMP agent available)

1. At least one network protocol required for network configurations; SNMP required only when using LanSafe III SNMP Agent. 2. Does not provide Customizable Alerts, Precision Power Control/Load Segments, voltage logging, or Powerware 9 Prestige UPS support. 3. Japanese versions available for Intel processor. 4. NetBios networking is supported for OS/2 with LanServer 3.0-4.0. 5. NetBios networking is supported for Windows 95, Windows 98, and Windows NT with LAN Manager 3.0.



Windows is a registered trademark of Microsoft Corporation. OS/2 is a registered trademark of International Business Machines Corporation. Novell and NetWare are registered trademarks of Novell, Inc. Other brand or product names are trademarks or registered trademarks of their respective holders. Due to continuing product improvement programs, specifications are subject to change without notice.

Powerware Corporation Corporate Headquarters

8609 Six Forks Road
Raleigh, NC 27615 U.S.A.
Toll Free: 1.877.PWRWARE
or 919.872.3020
Fax: 1.800.753.9433
or 919.870.3411
E-mail: info@powerware.com
www.powerware.com

SFT19FXA 10/99
RTP 10/99

Latin America/Caribbean
Sunrise, FL: 954.835.1180

Europe/Middle East/Africa
Berkshire, England: 44.1753.608700

Southeast Asia
Singapore: 65.861.9877

China and North Asia
Hong Kong: 852.2745.6682

Japan
Shinagawa Tokyo: 813.3447.5251

Australia and South Pacific
Sydney, Australia: 61.2.9878.5000

Canada
Toronto, Ontario: 416.798.0112

